



SAFETY AT THE HIGHEST LEVEL

## The Safety Solution for Overhead Life Lines



- COST EFFECTIVE OVERHEAD LIFE LINE
- ALLOWS SPANS OF UP TO 24M IN BETWEEN SUPPORTS
- DESIGN ALLOWS FOR TWO USERS
- INDEPENDENTLY TESTED TO THE REQUIREMENTS OF EN795



FM36179

# KeeLine® Overhead Life Line

**KEELINE Overhead** provides personal protection, either fall arrest or restraint, for up to two users. Used where it is beneficial to have the life line system mounted directly above the user, including vehicle loading, machine maintenance and access, building maintenance and cleaning and overhead crane access.

Gr. 316 Stainless steel 8mm dia. wire and electro-polished components are used to ensure a low maintenance, durable solution.

The permanently attached two wheeled traveller smoothly passes the intermediate brackets even when the user is

attached to the fully paid out length of a Self Retracting Life Line.

The system can be configured to allow single or multiple spans of up to 24m and the efficient patented **KEELINE** absorber minimises the end loads back to the supporting structure to below 10kN.

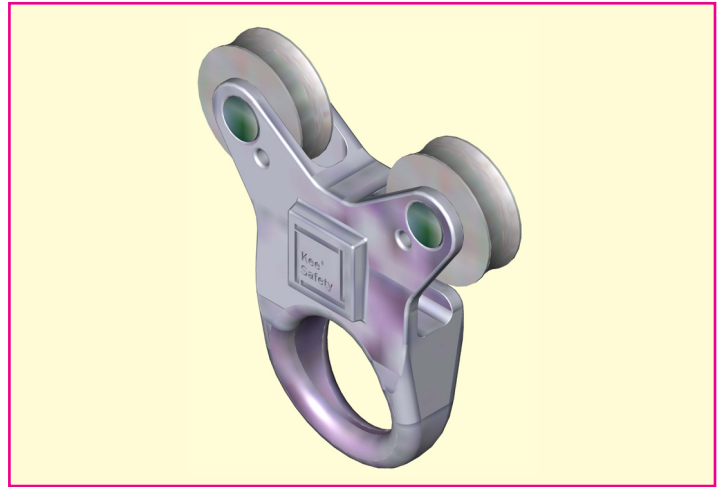
**KEELINE Overhead** has been tested in conjunction with the Xcalibre EN360 compliant Self Retracting Lifelines (Fall Arrest Blocks), rated for users up to 136kg, that lock off in the event of a fall to minimise forces to an acceptable level.

## Features



- Suitable for single or multiple span systems
- Spans of up to 24 m in between supports
- Higher pre-tension than standard **KEELINE** systems reduces line sag and cable deflection
- Independently tested by Satra in the UK to the requirements of EN795 Class C
- Meets the requirements of international standards

## Benefits



- Permanently attached, Gr.316 stainless steel, smooth running two wheeled traveller easily passes intermediate brackets
- In-line shock absorber limits end loads to structure
- End and intermediate brackets are installed directly to suitable structures, including steel or concrete
- Durable electro-polished Gr.316 stainless steel brackets and traveller



Roof Edge Fabrications  
The Roof Safety Centre  
144-146 Dalsetter Avenue  
Drumchapel Industrial Estate  
Glasgow  
G15 8TE

Tel: 0141 949 1014  
Fax: 0141 949 0998

Email: [anchors@roofedge.co.uk](mailto:anchors@roofedge.co.uk)  
[www.keesafetygroup.com](http://www.keesafetygroup.com)